



Marty's FlexKrete Job Tips

"FlexKrete makes it possible now!"

12/16/13, VOL VIII

MORE INCLEMENT WEATHER WORK!

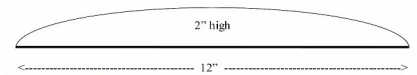
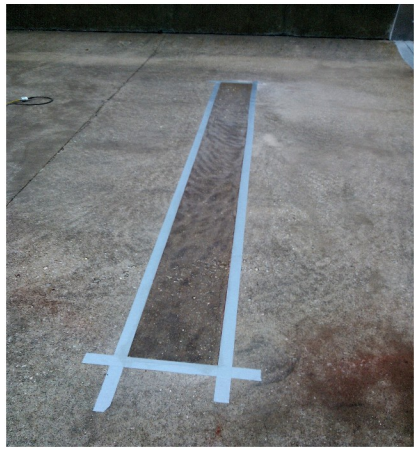
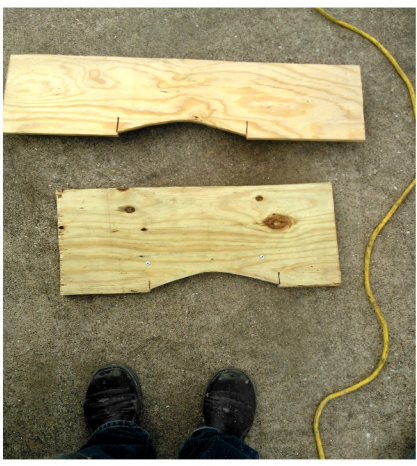
Have you ever seen cars speeding on the inside of parking garages, flying up and down the ramps and around the corners?

Why weren't there speed bumps there to slow such racers? Because most garages have prestressed concrete slabs with high tension cables throughout. If you happen to drill through, or cut, one of those cables, there may be a huge concrete explosion right there before your eyes.

Speed bumps are scarce in these facilities, but management wants and needs them. They have learned most will not stay in place. Sometimes adhesive works for a short time--**BUT FLEXKRETE WILL LAST!**

Greg Billingsly, of Billingsly & Associates, only one with a masters degree in FlexKreteology, knows how to install parking garage speed bumps! He has done them for years, and his oldest one still looks great after eight years. Greg recently completed ten more for a local management company, and here is how this pro does it.

First, decide, with management, the height of the speed bump, as this will determine the cost for each. A template can be made of wood, metal, etc., as shown on right. Secondly, grind area to a clean, white concrete. Neatly, tape around perimeter and FlexPrime it, allowing time for "tack". Mix FlexKrete to about a 3:1 sand ratio, spread, screed with the template, pull tape. It can be painted in an hour. Great work, Greg!



Meet with client and have them decide upon the exact shape and size they want. This will determine the amount of FlexKrete you will use.



Cut a screed to the exact shape your customer specified. This also makes installing a breeze.



A FlexKrete Speedbump in less than one hour